

Ku-Band Diplexer DPX75K-002

Optim Microwave, Inc.
4020 Adolfo Road
Camarillo CA 93012

January 14, 2014

1 Mechanical Specifications

1. Waveguide Interfaces

All ports WR75 Flange with 6-32 threaded holes

2. Weight 453.6g/1.0lb

3. Overall Length 123mm

2 Electrical Specifications

1. Frequency Band

Transmit: 13.75-14.50 GHz

Receive: 10.90-12.75 GHz

2. Insertion Loss

Receive port to Common port see plots

Transmit port to Common port see plots

3. Rejection

Transmit port to Common port (Rx Band) see plots

Receive port to Common port (Tx Band) see plots

Transmit port to Receive port (Rx Band) see plots

Transmit port to Receive port (Tx Band) see plots

4. Return Loss

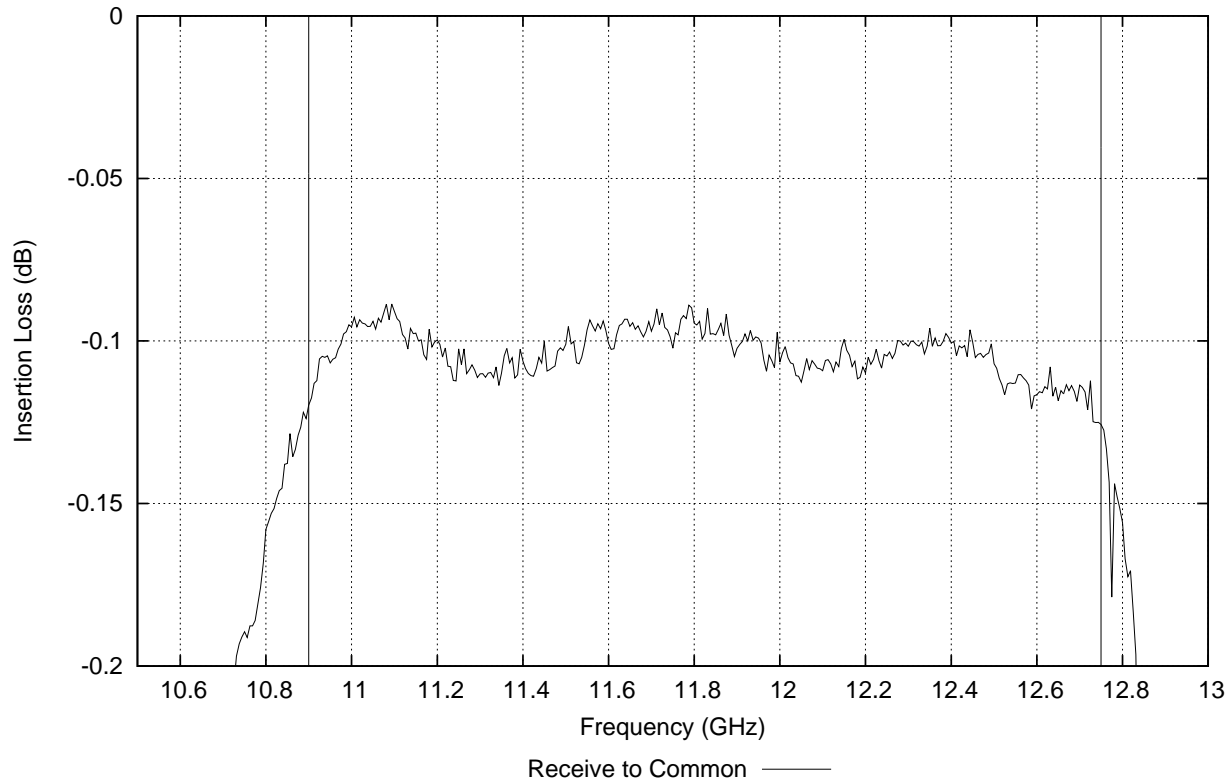
Transmit port see plots

Receive port see plots

3 Typical Electrical Performance Measurements

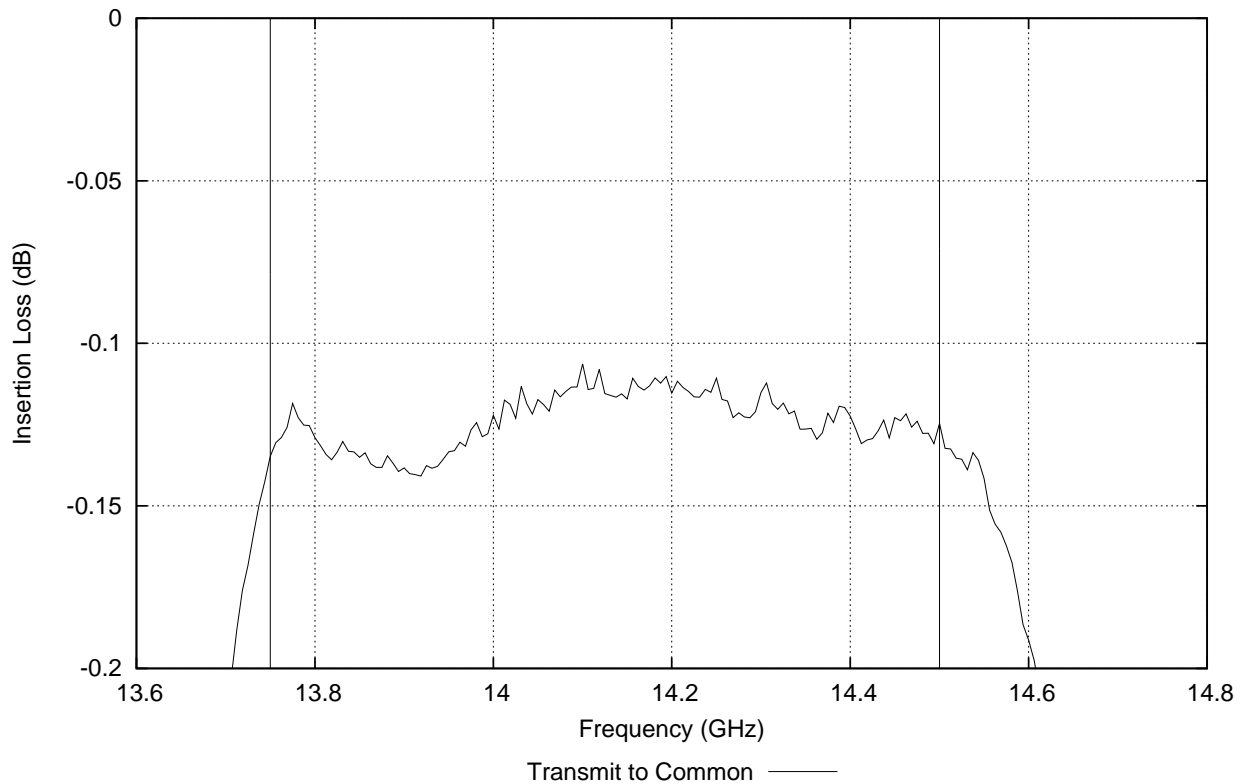
2014/01/14 12:19

DPX75K-002 S/N: 104, Trial: 01



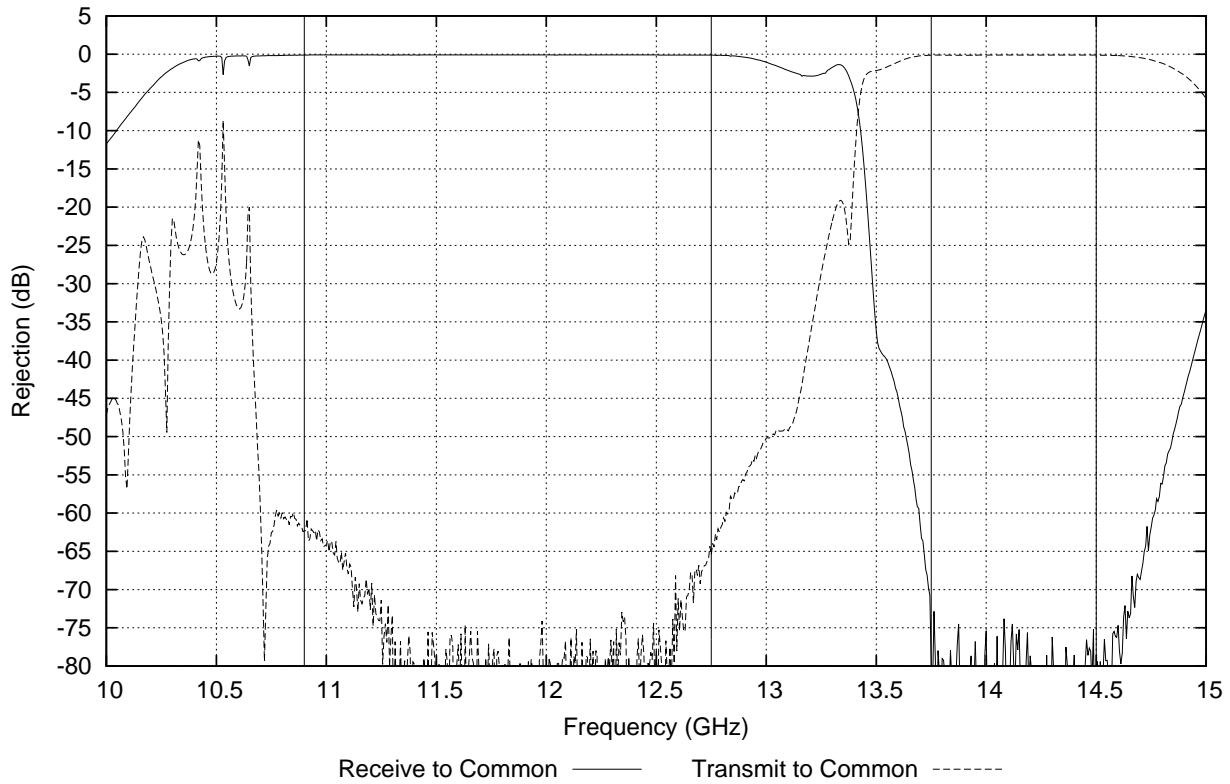
2014/01/14 11:01

DPX75K-002 S/N: 104, Trial: 01



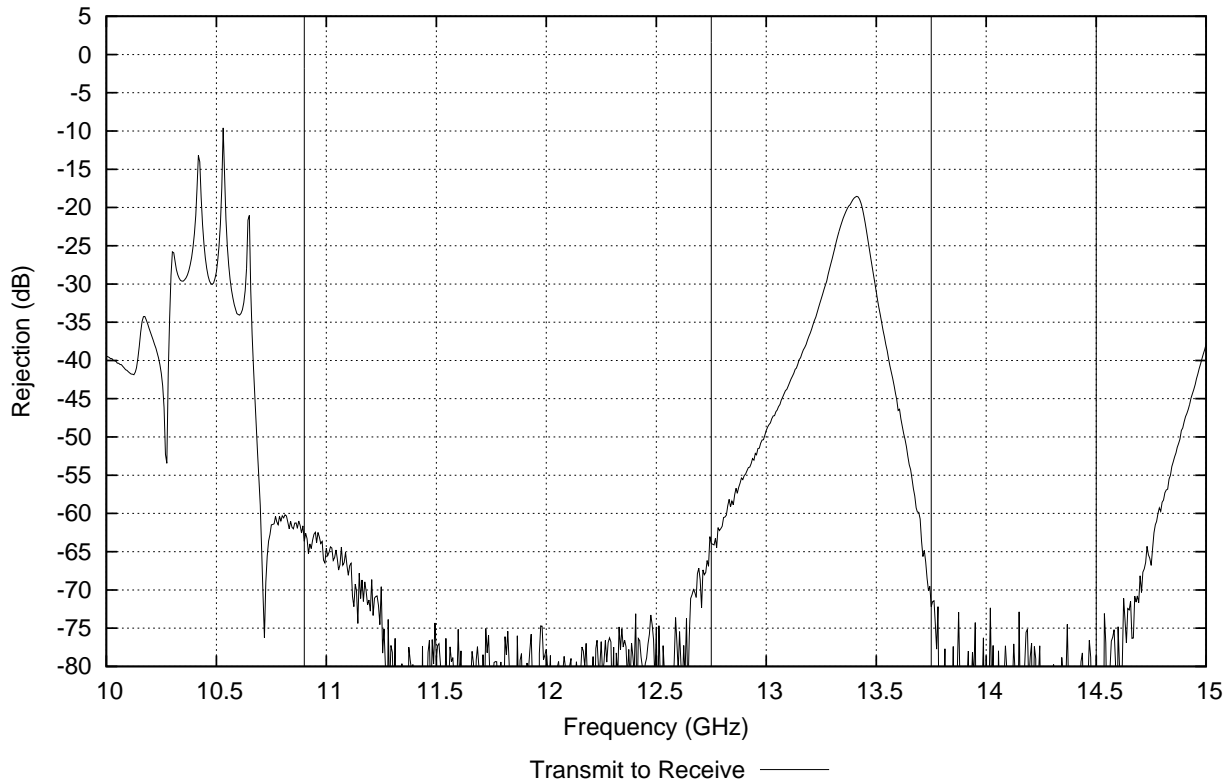
2014/01/14 11:01

DPX75K-002 S/N: 104, Trial: 01



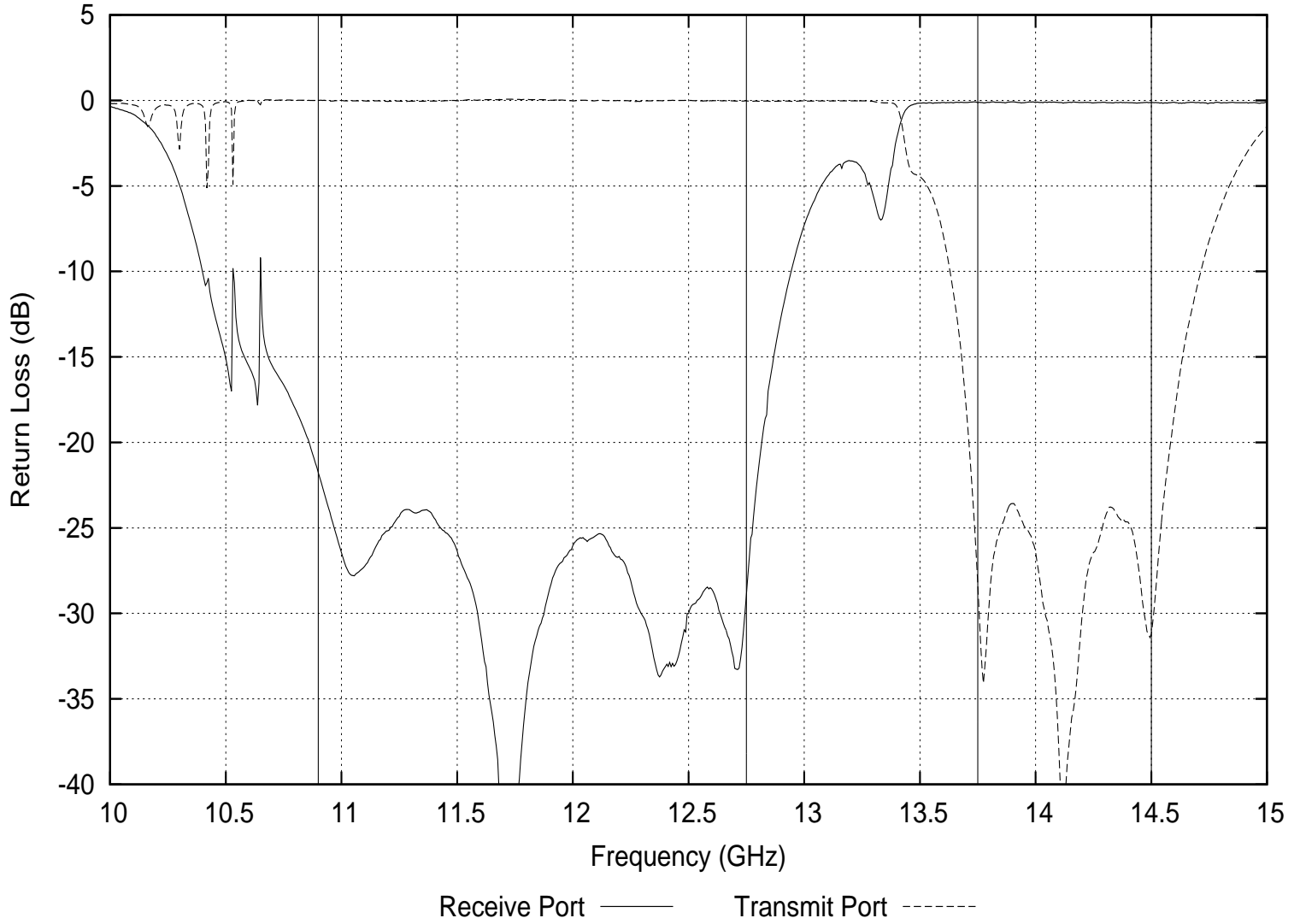
2014/01/14 11:01

DPX75K-002 S/N: 104, Trial: 01



2014/01/14 11:01

DPX75K-002 S/N: 104, Trial: 01



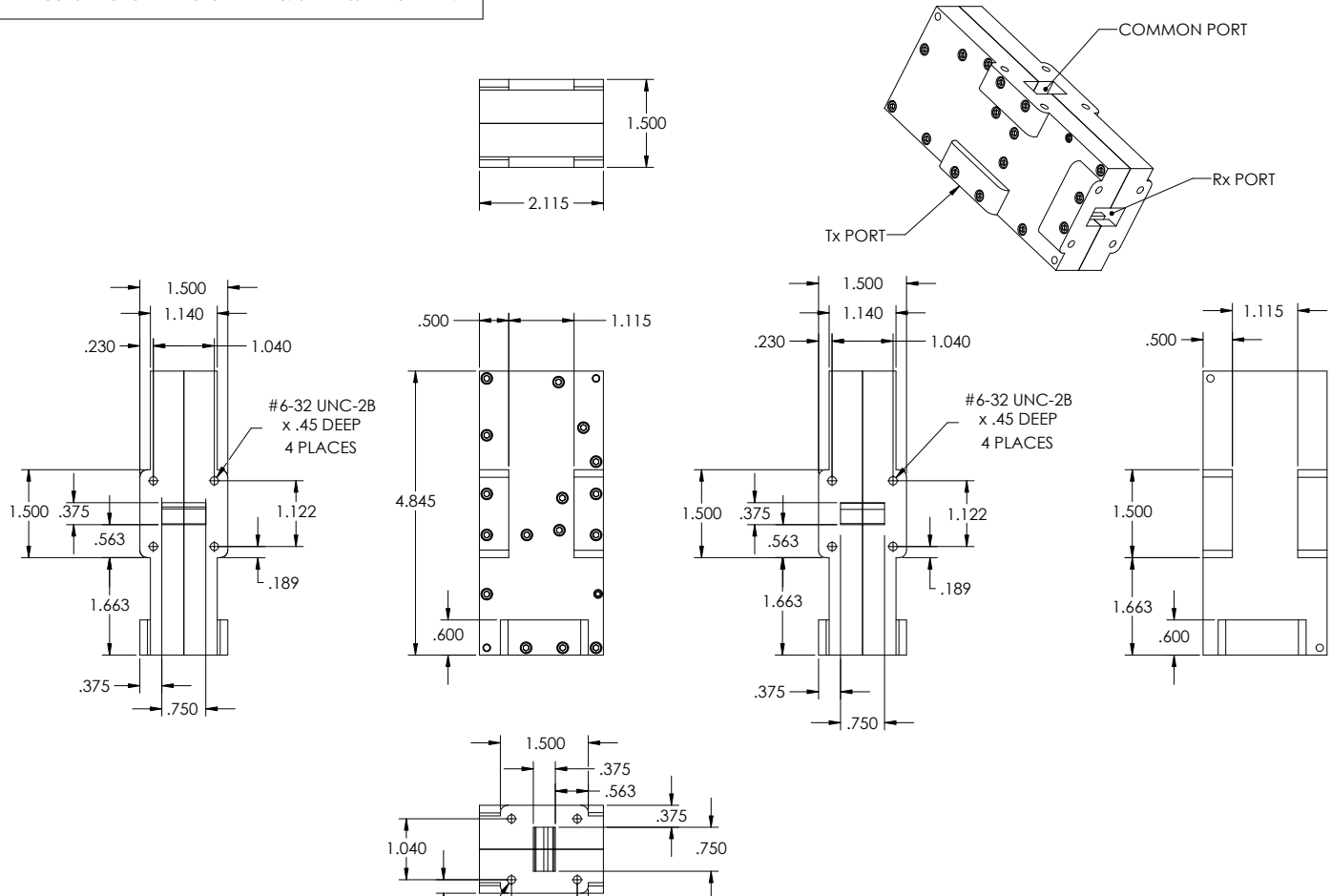
Optim Microwave Inc.

tel +1.805.482.7128
fax +1.805.445.4104

Online Info@optim-microwave.com
www.optim-microwave.com

4 Mechanical Diagram

THIS DOCUMENT CONTAINS CONFIDENTIAL, PROPRIETARY INFORMATION OF OPTIM MICROWAVE INC. ANY REPRODUCTION, USE OR DISCLOSURE OF THIS DOCUMENT OR THE INFORMATION CONTAINED HEREIN WITHOUT WRITTEN CONSENT OF OPTIM MICROWAVE INC. IS EXPRESSLY PROHIBITED.



NOTES: UNLESS OTHERWISE SPECIFIED

PARTS LIST		Optim Microwave	
UNLESS OTHERWISE SPECIFIED DIMENSIONS ARE IN INCHES TOLERANCES ARE: FRACTIONS DECIMALS ANGLES XX .02 .1°± XXX .005		CONTRACT NO. _____ APPROVALS _____ DATE 3/3/05 DRAWN TASC CHECKED _____ ISSUED _____	
MATERIAL 6061-T6 ALUM		Optim Microwave Microwave Circuits and Antenna Design 31300 Via Colinas, Suite 101 Westlake, Virginia, CA 94398-3018	
FINISH CHEM FILM GOLD		KU BAND DIPLEXER: Rx Port WR75: 10.95-12.75 GHZ Tx Port WR75: 13.75-1450 GHz Common Port WR75	
NEXT ASSEMBLY	USED ON	SIZE C	FSCM NO.
APPLICATION		DRAWING NO. DPX75K-002	
DO NOT SCALE DRAWING		SCALE 1:1	REV -
		SHEET 1 OF 1	

3/07/05